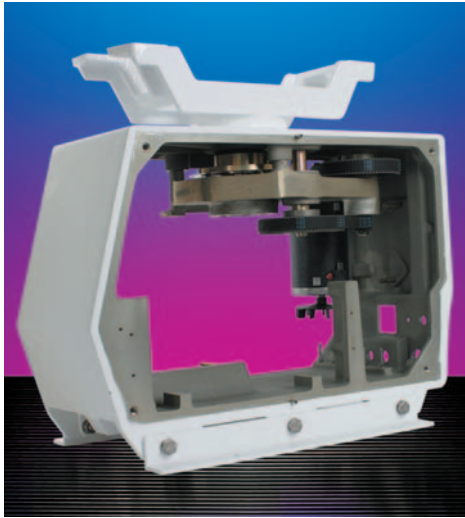




SPECIAL PROJECTS



Radar scanner drive.



Stairlift DC gearmotor.

CUSTOMISED DRIVE SYSTEMS

The Powerdrive comprehensive range of standard AC and DC gearmotors is complimented by a specialist design service to provide our customers with drive systems specific to their requirements.

Gearbox designs can be manufactured to the most exacting BS and DIN standards with casings being available in aluminium, cast iron and steel construction. All bearing locations and joint faces are CNC machined to ensure accurate gear meshing, essential for smooth quiet operation as demanded by many industrial and mobility equipment applications.

Gear systems include right angle or in line and our design service can provide calculations on gear strength and wear ratings in accordance with appropriate standards.

Where required for critical applications dynamometer test facilities are available with 100% load testing prior to despatch.

A variety of surface treatments are possible ranging from standard industrial finishes to specialist marine powder coating systems for the most arduous of environments.