



GEARBOXES, GEAR UNITS & MECHANICAL VARIATORS



MRS 50 and MRT 40 Worm Gearboxes with hollow output shafts fitted with IEC metric motors.

VARVEL

Cost effective designs offering maintenance free lubricated for life performance, the VARVEL range includes:-

RS – WORM GEARBOXES

MRS – motorised units.

FRS – non motorised units with input flange and hollow shaft for standard IEC metric motor fitting available in either B14 or B5 flanges.

RS – free shaft extension on input side and hollow shaft on output side.

- Nine sizes: single and double mounting.
- Centre distance from 28mm to 150mm.
- Power transmission capacity from 0.03 to 25Kw.
- Reduction ratio from 7:1 to 10000:1.
- Torque from 8 to 1680Nm.
- Separate single or double output shaft.
- Torque limiters and speed limiters available as optional extras.

RT – “UNIVERSAL MOUNTING” WORM GEARBOXES

MRT – motorised units.

FRT – Non motorised units with input flange and hollow shaft for standard IEC metric motor fitting available in either B14 or B5 flanges.

RT – free shaft extension on input side and hollow shaft on output side.

- Five sizes: single and double mounting.
- Centre distance from 28mm to 111mm.
- Power transmission capacity from 0.09 to 5.5W.
- Reduction ratio from 7:1 to 10000:1.
- Output torque from 3.5 to 656Nm.

RD – HELICAL GEARBOXES

MRD – motorised units.

FRT – Speed reducers with IEC input flanges.

RD – Speed reducers with free input flanges.

- Strong robust design with high torque output.
- Seven sizes: single, double and triple reduction.
- Power transmission capacity from 0.08 to 22 kw.
- Reduction rotation from 1.49:1 to 3620:1.
- torque from 20 to 2500Nm.



Varvel MRD 220 Helical Gearbox.

TO VIEW THE VARVEL WEBSITE [CLICK HERE](#)



GEARBOXES, GEAR UNITS & MECHANICAL VARIATORS



Varvel MRC 220 Helical Gearbox.



Varvel MRA and FRA Helical Worm Gearbox together with MRS 40 Gearbox with integral torque limiter.

RC – HELICAL GEARBOXES

MRC – motorised units.

FRC – Non motorised units with input flange and hollow shaft for standard IEC metric motor fitting.

RC – free shaft extension on both the input and output sides.

- Seven sizes: single, double, triple and quadruple reduction.
- Power transmission capacity from 0.09 to 45 Kw.
- Reduction ratio from 1.49:1 to 3620:1.
- Torque from 10 to 5620Nm.

RA/TA – HELICAL/WORM GEARBOXES

TA universal cubic design fitted with helical input stage.

MRA/MTA – Motorised units with helical first stage reduction and worm second stage for wide range of reduction ratios and higher efficiency.

FRA/FTA – Non-motorised units with input flange and hollow shaft for standard IEC metric motor fitting.

RA/RT – free shaft extension on input side and hollow shaft on output side.

- Eight sizes with centre distances from 40 to 150mm.
- Power transmission capacity from 0.02 to 8Kw.
- Reduction ratio from 25:1 to 830:1.
- Torque from 20 to 2860Nm.

VR VARIABLE SPEED DRIVES

VR – Variable speed drives are lubrication free with graphite friction ring for long life operation.

The patented sealing arrangement is suitable for use in the most hostile of environments.

The unique design is capable of adjustment while the drive is stationary.

MVR – motorised units with stepless adjustable ratio 5:1

FVR – non-motorised units with input flange and hollow shaft for standard IEC metric motor fitting.

- Four sizes available with or without fixed reduction incorporating helical or worm units.
- Adjustable speed ratio 5:1.
- Reduction ratio from 1:1 to 432:1.
- Power transmission capacity from 0.08 to 1.5Kw.
- Torque from 0.5 to 5500Nm.



GEARBOXES, GEAR UNITS & MECHANICAL VARIATORS

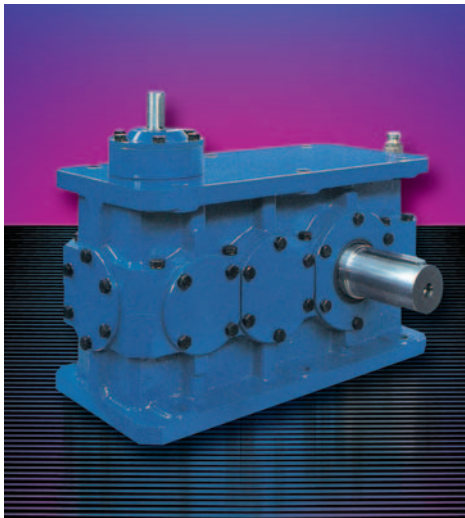


RP parallel shaft speed reducer.

PARALLEL AND RIGHT ANGLE SHAFT

Parallel shaft and right angle shaft speed reducers and gearmotors available in a wide range of mounting configurations and transmission ratios. This range of gearboxes incorporates hardened and ground gears with quality taper roller or self aligning bearings for high performance operation. Special designs available with oil lubrication pump and heavy duty output bearing arrangement for extruder duty.

- Fifteen sizes from 80mm to 630mm diameter centre height offering single, double and triple stage reductions.
- Power transmission capacities from 0.06 to 5259kw.
- Reduction ratios from 1.12:1 to 1250:1.
- Torque from 275Nm to 315000Nm.
- Designs available for flange mounted motor input, strengthened output bearings, double lip seals.



RO right angle speed reducer.

MOTORS

A comprehensive range of both AC and DC motors are available either stand alone or integral with any of the ranges of gearboxes featured in this catalogue. Standard ranges, many of which are ex-stock, include:-

- 1PH and 3PH AC Motors to IEC, NEMA and CSA standards.
- 1PH and 3PH AC Motors complete with integral spring applied brake.
- DC permanent magnet motors.
- DC shunt wound motors.
- Special purpose motors available to order, eg. flameproof, washdown, two speed etc.

BEVEL GEAR UNITS

Two distinct ranges of spiral-toothed Bevel Gear units are available offering high torque to size ratio, together with quiet vibration free performance. Both ranges are maintenance free lubricated for life.



GEARBOXES, GEAR UNITS & MECHANICAL VARIATORS



POWERTEK

Precision high performance gears are housed in an aluminium casing and employ double shielded greased for life bearings with stainless steel shafts fitted as standard.

- Five sizes with power transmission capacities from 0.02Kw to 9.75Kw.
- Ratios 1:1 and 2:1.
- Output torque from 3.75Nm to 711Um.
- Right angle, three way and counter rotating gear reducers.

ATEK BEVEL GEAR UNITS

Heavy duty series available as either motorised units or gear reducers. High performance gears are housed in cast metal casings with 10 different standard versions. Custom made solutions for almost any application.

- V series versatile and cost effective.
- K heavy duty series with large taper roller bearings.
- Power transmission capacities 0.05Kw to 190Kw.
- Ratios 1:1, 1.5:1, 2:1,3:1 and 4:1.
- Output torque from 10Nm to 2310Nm.

TO VIEW THE ATEK WEBSITE [CLICK HERE](#)