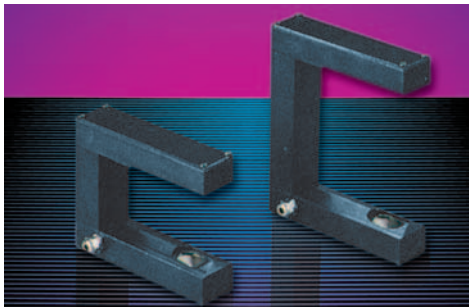
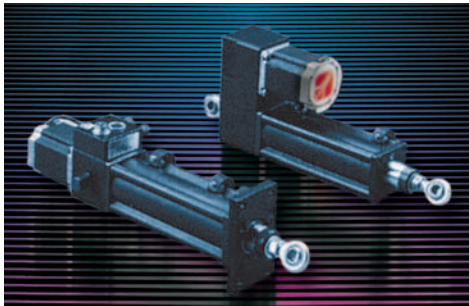
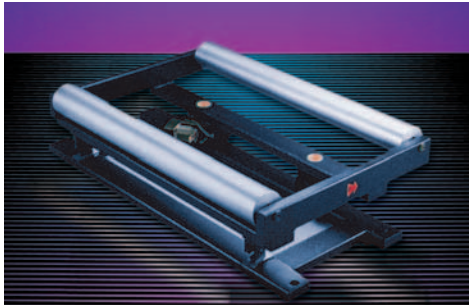




## WEB GUIDE SYSTEMS



The Web Guide systems from Re Spa are designed to eliminate all problems associated with guiding any type of laminate, be it edge or line guide system.

We can offer;

- High precision stepping motor driven to give precise proportional movement.
- Very low maintenance costs.
- Correcting movement is directly proportional to the error and is quickly and accurately controlled.
- Simple installation and user friendly calibration.

### CORRECTION DEVICES

Designed to be easily mounted with minimum maintenance costs the correction devices fall into 3 main types.

- Linear actuator, series AT.
- Pivoting frame, series WG.
- Steering rolls, series WR.

### POSITION SENSORS

Re Spa sensors have been carefully selected to provide the best operating conditions for all types of materials and in any guide configuration.

The following 3 sensors were selected after extensive research and development.

- Ultrasonic sensor SU5.
- Infrared sensor SIR.
- Optical Sensor SL3.

### RELINK CONTROL SYSTEM

This new concept of edge guide developed by Re, enables up to 10 web guides to be checked at the same time with a single remote control unit. The Relink system consists of a single driver MWG.61 which because it is so compact can be fitted to the structure of one of the correction devices, connected to a series of others and to the RK.31 remote control unit.

The RK.31 remote control LCD display gives a clear and precise picture of each driver. A multi language menu simplifies the actions of the operator and a series of pop up messages accompany the calibration procedure and signal any problems.

A single user interface checks all the web guides installed on your system.

**TO VIEW THE RE SPA WEBSITE CLICK HERE**